

# DATA SHEET

TYPE: **PVDJP 020 - ....**

Standard acc. to IEC 61071  
acc. to EN 61881

## CHARACTERISTICS

		8/1	8/0,75	8/0,5	8/0,45	8/0,33
Rated DC voltage	VDC			6 400		
Voltage AC rms max	V			3 200		
Capacitance	µF	1	0,75	0,5	0,45	0,33
C <sub>N</sub> tolerance	%	- 10/+10	- 5/+5	- 5/+5	- 5/+5	- 5/+5
Current	A rms	30	25	20	20	12
u <sub>max</sub> periodic	V			8 000		
u <sub>s</sub> non periodic	V			9 600		
i <sub>max</sub> periodic /0,1 Hz	kA	0,8	0,5	0,4	0,4	0,25
i <sub>s</sub> non periodic	kA	2,4	1,5	1,2	1,2	0,75

Self inductance	nH			15		
Series resistance	mΩ	4	5	6	6	8
Diel.dissipation factor	tanΔ <sub>0</sub>			2x10 <sup>-4</sup>		

## THERMAL CONDITIONS

Lowest/Max. operating temp.	°C			-25/+70		
Storage temperature	°C			-40/+85		
Thermal res. Rth	K/W	8	9	9	9	9,2

## DIMENSION

ØD ±1	mm	65	60	60	60	55
L	mm	133	133	133	133	133
Terminal	M			M8x8		
Max. torque M8	Nm			8		
Clearance in air	mm			>140		
Creepage distance	mm			>140		

## TEST DATA

Test voltage U <sub>TT</sub>	VDC			9 600		
Test time	sec			10		

## SERVIS LIFE

Life expectancy / 60°C	h			≥120000		
------------------------	---	--	--	---------	--	--

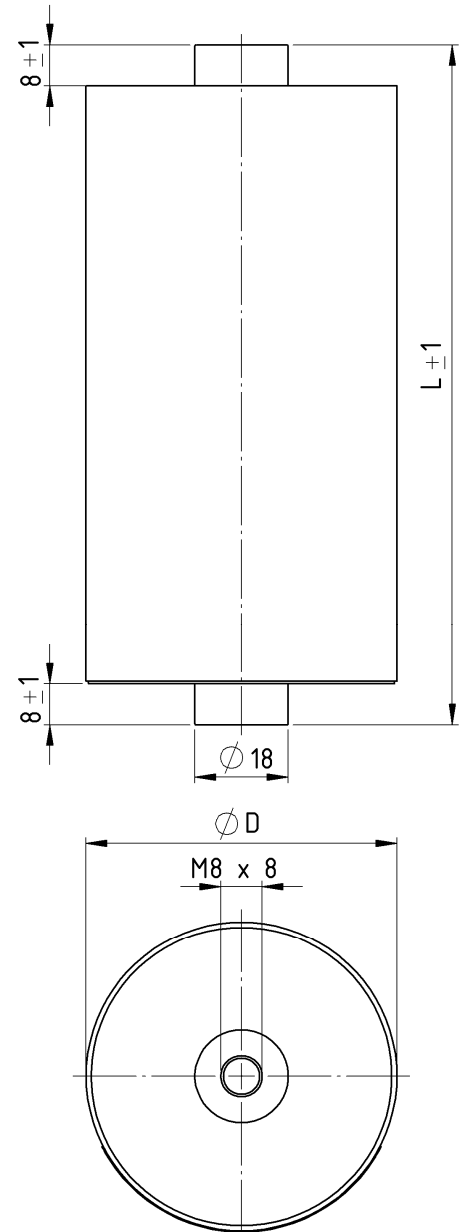
## DESIGN

Design MKP metallized polypropylene capacitors encapsulated in insulating case + polyurethan resin UL-94,V0, PCB and halogen free  
Operating position arbitrary

Safety devices No fuse Without interrupter

Weight kg 0,64 0,55 0,55 0,55 0,45

Outline drawing



TYPE :	see above	DRW. No. :	<b>3BS 1117e</b>	DRAWN :	Michalovičová
				APPVD :	Ing.Lipenský
				Date :	11.5.2009
	<b>ZEZ-SILKO s.r.o.</b> Pod Černým lesem 683 CZ 564 01 ŽAMBERK Czech Republic	tel : +420 465 673 111 fax : +420 465 612 319 e-mail : zez@zez-silko.cz http://www.zez-silko.cz	Modification index :		
			a-Z-13/17 (Lv)	30.6.2017	MICH
			b-type 8/0,33	3.10.2017	Pok
			c-add param.	22.11.2017	Pok
			d-type 8/0,45	17.12.2018	Pok