

# TBI-TRH25 - Linear Guides



SPECIFICATIONS

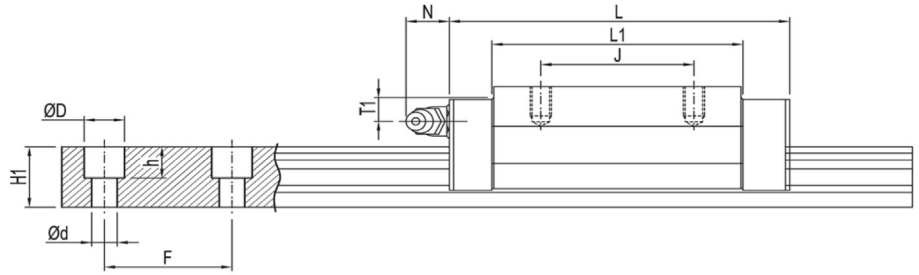
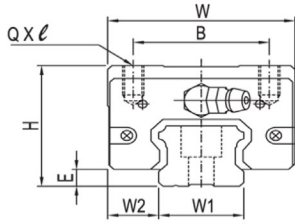
| Block Part Number | Fabrication Dimensions (mm) |                |     | Block Dimensions (mm) |    |    |     |    |       |      | Load Capacities (KN) |                | Static Moment (Nm) |                |                | Weight (lbs) |
|-------------------|-----------------------------|----------------|-----|-----------------------|----|----|-----|----|-------|------|----------------------|----------------|--------------------|----------------|----------------|--------------|
|                   | H                           | W <sub>2</sub> | E   | W                     | B  | J  | L   | L1 | QxL   | T1   | C                    | C <sub>0</sub> | M <sub>x</sub>     | M <sub>y</sub> | M <sub>z</sub> |              |
| TBI-TRH25FL-N-Z0  | 36                          | 23.5           | 5.8 | 70                    | 57 | 45 | 92  | 71 | M8x12 | 7.5  | 28.2                 | 51.5           | 597.7              | 584.3          | 584.3          | 1.5          |
| TBI-TRH25VE-N-Z0  | 40                          | 12.5           | 5.8 | 48                    | 35 | 50 | 110 | 88 | M6x8  | 11.5 | 31.9                 | 61.3           | 711.5              | 834.7          | 834.7          | 1.2          |
| TBI-TRH25VL-N-Z0  | 40                          | 12.5           | 5.8 | 48                    | 35 | 35 | 92  | 71 | M6x8  | 11.5 | 28.2                 | 51.5           | 597.7              | 584.3          | 584.3          | 1.4          |

| Rail Part Number     | Rail Dimensions (mm) |                |    |    |   |            |                  | Weight (g/m) |
|----------------------|----------------------|----------------|----|----|---|------------|------------------|--------------|
|                      | W <sub>1</sub>       | H <sub>1</sub> | F  | D  | d | d x D x h  | Rail Length (mm) |              |
| TBI-TR25N-0150-15-15 | 23                   | 20             | 60 | 11 | 7 | 7 x 11 x 9 | 150              | 1.1          |
| TBI-TR25N-0300-30-30 | 23                   | 20             | 60 | 11 | 7 | 7 x 11 x 9 | 300              | 2.1          |
| TBI-TR25N-0500-10-10 | 23                   | 20             | 60 | 11 | 7 | 7 x 11 x 9 | 500              | 3.5          |
| TBI-TR25N-0700-20-20 | 23                   | 20             | 60 | 11 | 7 | 7 x 11 x 9 | 700              | 4.9          |
| TBI-TR25N-0900-30-30 | 23                   | 20             | 60 | 11 | 7 | 7 x 11 x 9 | 900              | 6.3          |
| TBI-TR25N-1100-10-10 | 23                   | 20             | 60 | 11 | 7 | 7 x 11 x 9 | 1100             | 7.7          |
| TBI-TR25N-1300-20-20 | 23                   | 20             | 60 | 11 | 7 | 7 x 11 x 9 | 1300             | 9.1          |
| TBI-TR25N-1500-30-30 | 23                   | 20             | 60 | 11 | 7 | 7 x 11 x 9 | 1500             | 10.5         |
| TBI-TR25N-1700-10-10 | 23                   | 20             | 60 | 11 | 7 | 7 x 11 x 9 | 1700             | 11.9         |
| TBI-TR25N-1900-20-20 | 23                   | 20             | 60 | 11 | 7 | 7 x 11 x 9 | 1900             | 13.3         |
| TBI-TR25N-2100-30-30 | 23                   | 20             | 60 | 11 | 7 | 7 x 11 x 9 | 2100             | 14.7         |
| TBI-TR25N-2300-10-10 | 23                   | 20             | 60 | 11 | 7 | 7 x 11 x 9 | 2300             | 16.1         |
| TBI-TR25N-2500-20-20 | 23                   | 20             | 60 | 11 | 7 | 7 x 11 x 9 | 2500             | 17.5         |
| TBI-TR25N-2700-30-30 | 23                   | 20             | 60 | 11 | 7 | 7 x 11 x 9 | 2700             | 18.9         |
| TBI-TR25N-2900-10-10 | 23                   | 20             | 60 | 11 | 7 | 7 x 11 x 9 | 2900             | 20.3         |
| TBI-TR25N-3100-20-20 | 23                   | 20             | 60 | 11 | 7 | 7 x 11 x 9 | 3100             | 21.7         |
| TBI-TR25N-3300-30-30 | 23                   | 20             | 60 | 11 | 7 | 7 x 11 x 9 | 3300             | 23.1         |
| TBI-TR25N-3500-10-10 | 23                   | 20             | 60 | 11 | 7 | 7 x 11 x 9 | 3500             | 24.5         |
| TBI-TR25N-3700-20-20 | 23                   | 20             | 60 | 11 | 7 | 7 x 11 x 9 | 3700             | 25.9         |
| TBI-TR25N-3900-30-30 | 23                   | 20             | 60 | 11 | 7 | 7 x 11 x 9 | 3900             | 27.3         |
| TBI-TR25N-4000L      | 23                   | 20             | 60 | 11 | 7 | 7 x 11 x 9 | 4000             | 28.0         |

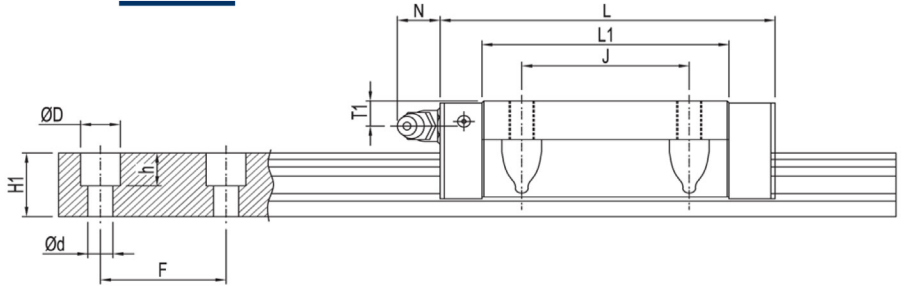
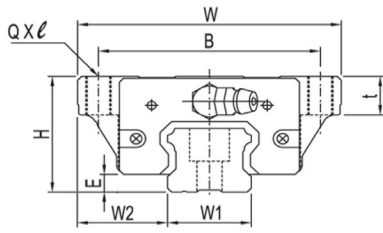
The rated load capacities and static moment values are calculated according to the ISO14728 standard. The rated life for basic dynamic load is defined as the total 100km travel distance that 90% of a group of identical linear guides can be operated individually under the same conditions, free from any material damage caused by rolling fatigue-When the standard of 50km travel distance is applied. The basic dynamic load rating C of ISO14728 should be multiplied by 1.26 for conversion.

Distributed by Anaheim Automation, Inc.  
 USA Stock in Anaheim, CA  
 1-800-345-9401  
[www.anaheimautomation.com](http://www.anaheimautomation.com)

**TRH-V**



**TRH-F**



**Force Diagram**

