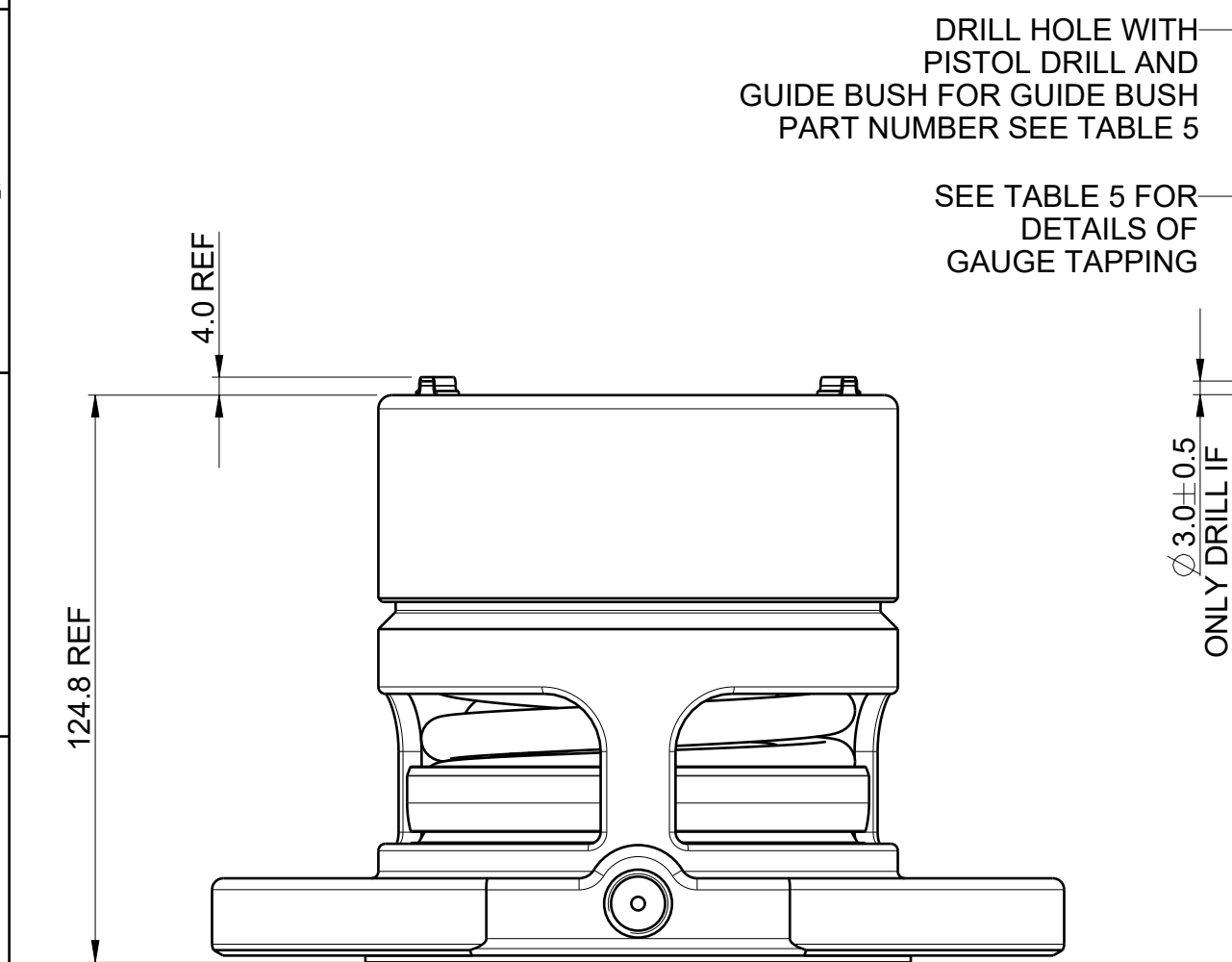
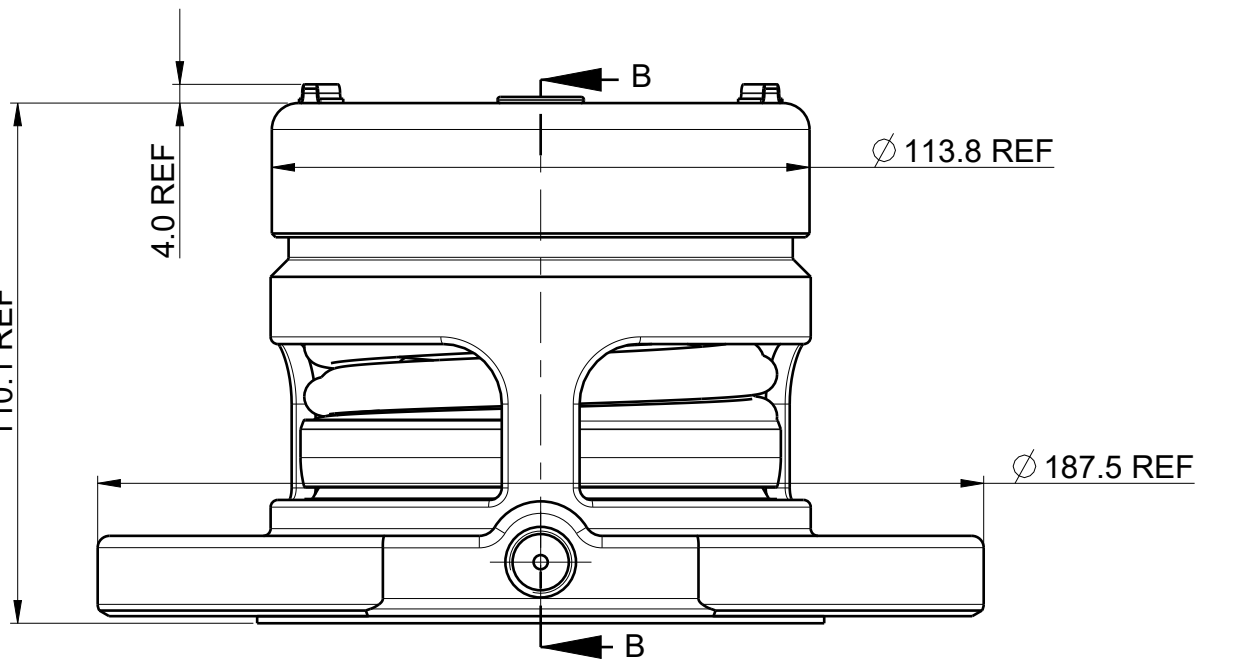
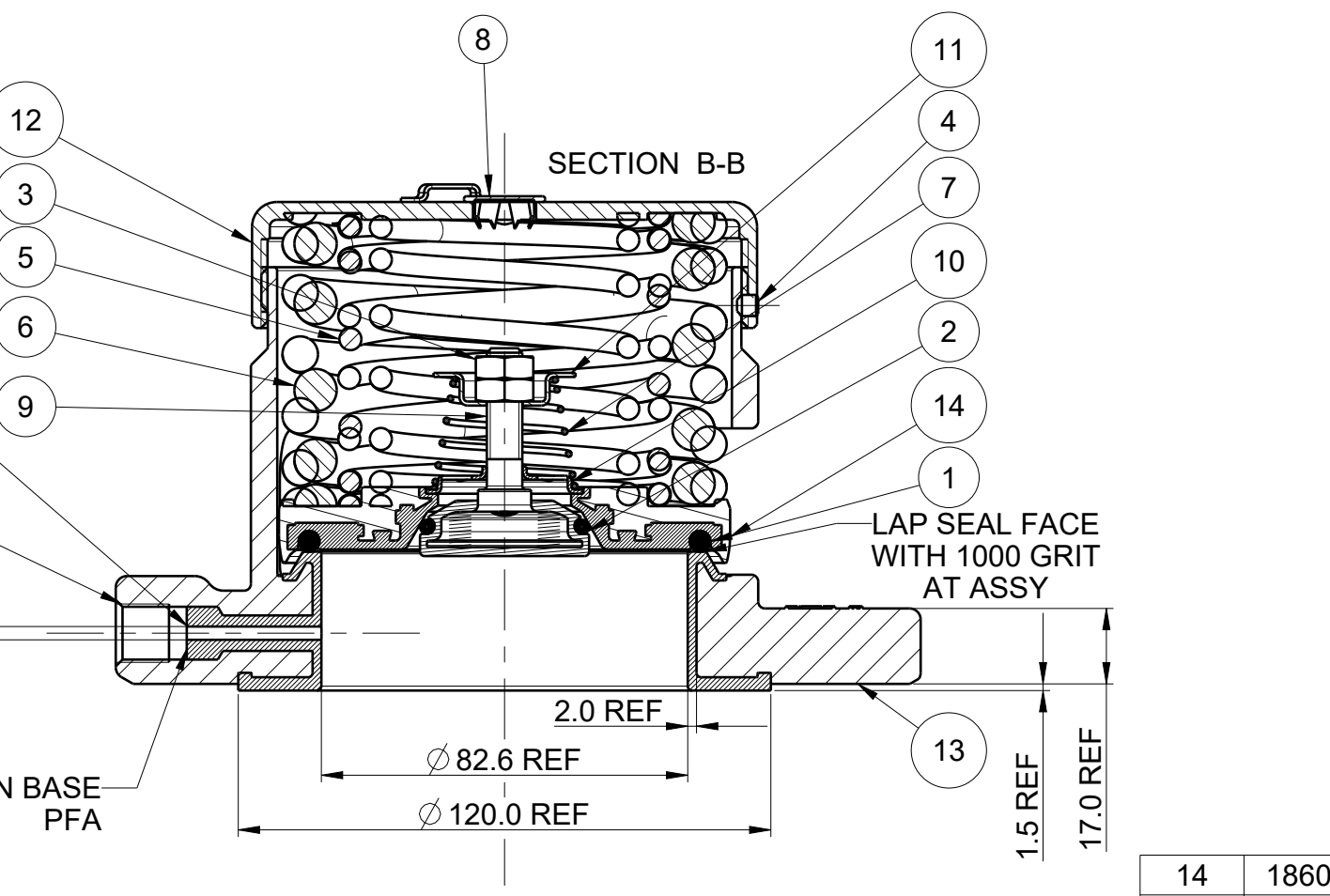


TABLE 5	
GAUGE TAPPING	GUIDE BUSH
1/4" BSP	1860/08BSP/1
3/8" BSP	1860/08BSP/2
1/4" NPT	1860/08NPT/1

DRAWING STATUS		PRODUCTION	
REVISION	19	SIG	M HUGHES
		12-Sept-19	
TOP CAP WAS 1860/0046656 AND PRESSURE PLATE WAS 1860/P061656 FOR 37 & 39 PSI OPTIONS IN TABLE 1			



DRILL HOLE WITH PISTOL DRILL AND GUIDE BUSH FOR GUIDE BUSH PART NUMBER SEE TABLE 5
SEE TABLE 5 FOR DETAILS OF GAUGE TAPPING



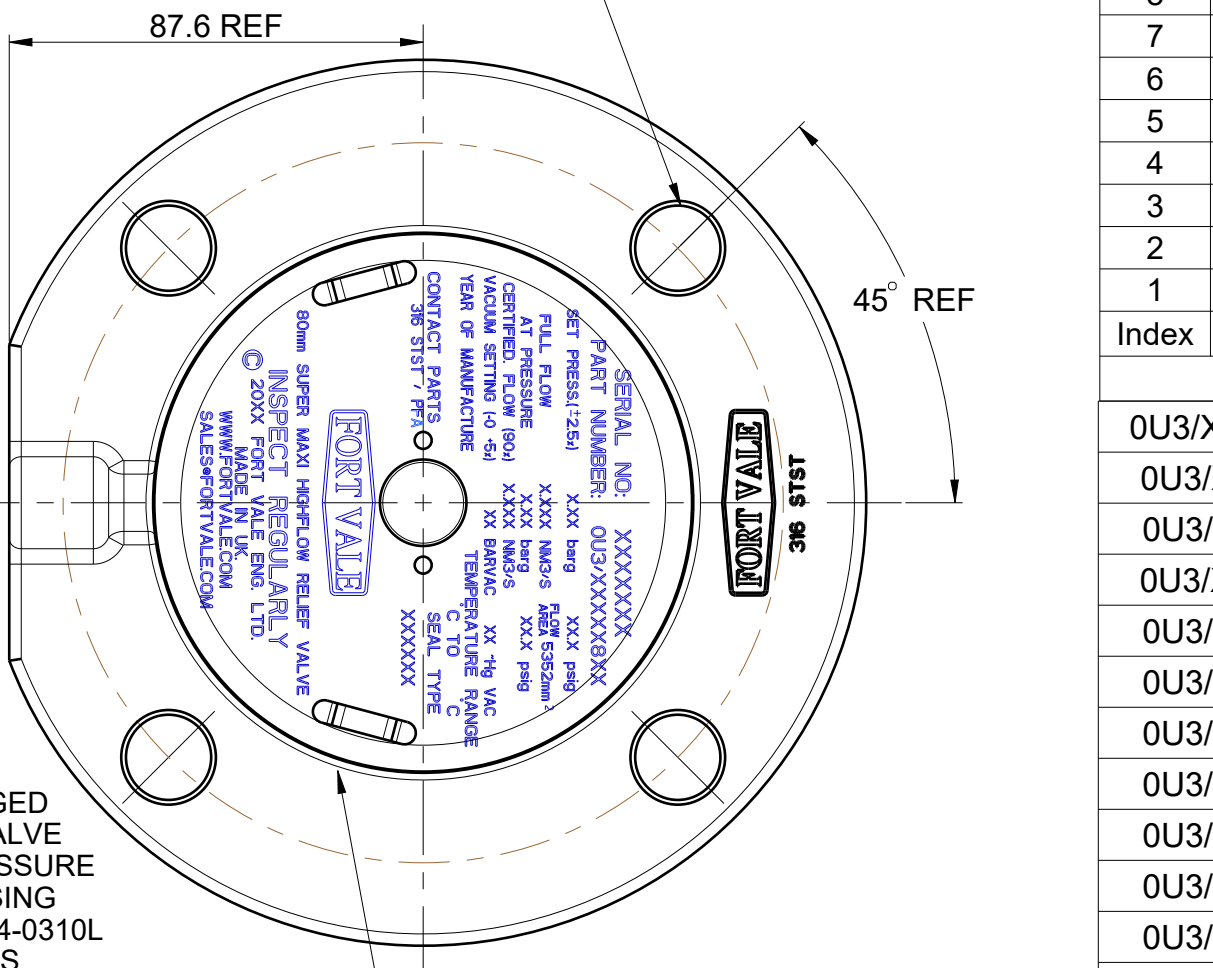
PART NUMBER	VACUUM SETTING barg [”Hg]	VACUUM SPRING
0U3/XXX188XX	0.30 [9.0]	7104-018H
0U3/XXX128XX	0.21 [6.2]	7104-012H
0U3/XXX068XX	0.10 [3.0]	7104-006H
0U3/XXX038XX	0.05 [1.5]	7104-002H
0U3/XXX028XX	0.03 [1.0]	7104-001H
0U3/XXX018XX	0.02 [0.5]	7104-001H

TABLE 3

PART NUMBER	PRESSURE 'O' RING	VACUUM 'O' RING	MIN TEMP	MAX TEMP
0U3/7XXX8XX (KALREZ)	5005-376K	5005-107K	-4°C (25°F)	150°C (302 °F)
0U3/1XXX8XX (FORTYT)	5005-104	5005-108H	-55°C (-67 °F)	150°C (302 °F)
0U3/0XXX8XX (VITON)	5005-376	5005-107	-18°C (-0 °F)	150°C (302 °F)

TABLE 2

0U3/13212805 VALVE DENOTES FLANGED PFA LINED SUPER MAXI HIGHFLOW RELIEF VALVE PRESSURE VACUUM WITH 31.8 psig PRESSURE SETTING & 6”Hg VACUUM SETTING USING HALAR LINED PRESSURE SPRING No 6104-0310L HASTELLOY C276 VACUUM SPRINGS VACUUM SPRING NO 7104-012H WITH FORTYT PRESSURE AND VACUUM SEALS



Index	Part Number	Description	Material	Qty
14	1860/P061XXX	LINED PRESSURE PLATE (SEE TABLE 1)	316 STST/ PFA	1
13	1860/08XXU	PFA LINED SUPER MAXI BODY (SEE TABLE 4)	316 STST/ PFA	1
12	1860/00XXXXX	TOP CAP MACHINING (SEE TABLE 1)	304 STST	1
11	1860/0005	VACUUM SPRING PAD	316 STST	1
10	10986/3H	SPRING PAD HASTELLOY	N10276	1
9	10983V/P	LINED VACUUM POPPET	316 STST / PFA	1
8	10978	STAINLESS PLUG	316 STST	1
7	7104-XXXH	VACUUM SPRING (SEE TABLE 3)	HASTELLOY C276	1
6	6104-XXXX	OUTER SPRING (SEE TABLE 1)	STST / HALAR	1
5	6104-XXXX	INNER SPRING (SEE TABLE 1)	STST / HALAR	1
4	5121-001	3/16”BSW.3/16”LG SOCKETHEAD	304 STST	1
3	5112-004	M8 HALF NUT	304 STST	2
2	5005-XXX	VACUUM POPPET SEAL (SEE TABLE 2)	FORTYT (FEP/HOLLOW)	1
1	5005-XXX	PRESSURE PLATE SEAL (SEE TABLE 2)	FORTYT (FEP/Si)	1

Assembly BOM				
PART NUMBER	FLANGE SPECIFICATION	VALVE BODY PART NUMBER	FLANGE DRILLING DETAILS	GAUGE TAPPING
0U3/XXXXX8SLB	SLOTTED	1860/08SLBU	4 SLOTS 18mm WIDE EQUI-SPACED ON A 145mm PCD TO 152.4MM PCD	NO GAUGE TAPPING
0U3/XXXXX8SL	SLOTTED	1860/08SLU	4 SLOTS 18mm WIDE EQUI-SPACED ON 145 PCD TO 152.4 PCD	1/4”BSP
0U3/XXXXX809	2.5” ASA 150	1860/0809U	4 HOLES Ø 18mm THRO EQUI-SPACED ON A 139.7 PCD	3/8”BSP
0U3/XXXXX80N	3” ASA 150	1860/080NU	4 HOLES Ø 18mm THRO EQUI-SPACED ON A 152.4 PCD	1/4”NPT
0U3/XXXXX808	3” ASA 150	1860/0808U	4 HOLES Ø 18mm THRO EQUI-SPACED ON A 152.4 PCD	NO GAUGE TAPPING
0U3/XXXXX807	DIN 80 PN 10	1860/0807U	4 HOLE Ø 18mm THRO EQUI-SPACED ON A 160.0 PCD	1/4”BSP
0U3/XXXXX805	3.0” ASA 150	1860/0805U	4 HOLES Ø 18mm THRO EQUI-SPACED ON A 152.4 PCD	1/4”BSP
0U3/XXXXX804	2.5” ASA 150	1860/0804U	4 HOLES Ø 18mm THRO EQUI-SPACED ON A 139.7 PCD	1/4”BSP
0U3/XXXXX803	3.0” TABLE D	1860/0803U	4 HOLES Ø 18mm THRO EQUI-SPACED ON A 146.1 PCD	1/4”BSP
0U3/XXXXX801	DIN 80 PN6	1860/0801U	4 HOLES Ø 18mm THRO EQUI-SPACED ON A 150.0 PCD	1/4”BSP
0U3/XXXXX800	DIN 65 PN10	1860/0800U	4 HOLES Ø 18mm THRO EQUI-SPACED ON A 145.0 PCD	1/4”BSP

TABLE 4

PART NUMBER	TOP CAP PART No.	PRESSURE PLATE PART No.	INNER SPRING	OUTER SPRING	SET PRESSURE BAR [PSI]	CERTIFIED FLOW 90% FULL FLOW NM ³ /S	OVER PRESSURE BAR [PSI]
0U3/X63XX8XX	1860/0041/854	1860/P061546	6104-0665L	SPRING PAIR	4.40 [63.8]	5.172	5.28 [76.56]
0U3/X58XX8XX	1860/0041/858	1860/P061586	6104-0600L	SPRING PAIR	4.00 [58.0]	4.776	4.80 [69.60]
0U3/X54XX8XX	1860/0041/855	1860/P061556	6104-0570L	SPRING PAIR	3.71 [53.8]	4.490	4.45 [64.56]
0U3/X44XX8XX	1860/0046577	1860/P061577	6104-0485C	SPRING PAIR	3.03 [44.0]	3.822	3.64 [52.80]
0U3/X39XX8XX	1860/0046506	1860/P061506	6104-0067L	6104-0310L	2.69 [39.0]	3.481	3.23 [46.80]
0U3/X37XX8XX	1860/0046506	1860/P061506	6104-0067L	6104-0310L	2.55 [37.0]	3.345	3.06 [44.40]
0U3/X32XX8XX	1860/0046656	1860/P061656	-	6104-0330L	2.19 [31.8]	2.991	2.63 [38.16]
0U3/X29XX8XX	1860/0046656	1860/P061656	-	6104-0310L	2.00 [29.0]	2.800	2.40 [34.80]
0U3/X25XX8XX	1860/0046606	1860/P061606	6104-0112L	6104-0184L	1.72 [25.0]	2.527	2.07 [30.00]
0U3/X15XX8XX	1860/0046655	1860/P061655	6104-0165L	-	1.03 [15.0]	1.846	1.24 [18.00]

TABLE 1

NOTE! PRESSURE SPRINGS HALAR LINED & VACUUM SPRINGS IN HASTELLOY ALL WETTED AREAS PFA COATED

DESIGN CODE : ASME VIII DIV 1
 DESIGN PRESSURE (MAWP) : 6 barg (87 psig)
 HYDRAULIC TEST PRESSURE : 10.1 barg (147 psig)
 MAX DESIGN TEMPERATURE : 150°C
 MIN DESIGN TEMPERATURE : SEE TABLE

SALES@FORTVALE.COM WWW.FORTVALE.COM

ENGLAND, USA, CHINA
NETHERLANDS, SINGAPORE

DO NOT SCALE- IF IN DOUBT ASK

UNLESS OTHERWISE STATED

FIRST ANGLE PROJECTION

MATERIAL: VARIOUS

SCALE: NTS MASS: 6.48 kg

CHECKED DVN: 33206

SHEET 1 OF 1

DRAWN BY: D BAILEY DATE: 10-Mar-09

DESCRIPTION: 80mm BORE FLANGED SUPERMAXI HIGHFLOW R/V

TYPE: MK3 80mm FLANGED SUPER MAXI SCHEME

DRG.NO. 0U3/XXXXX8XX