

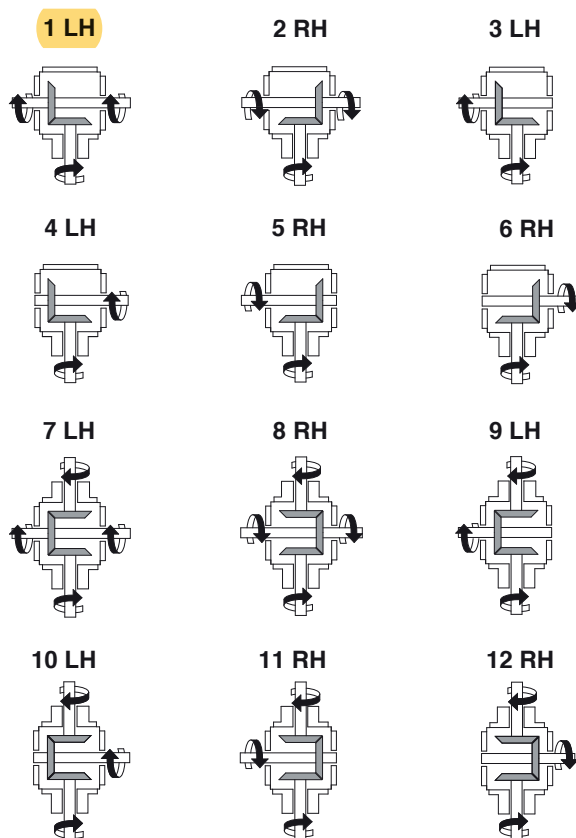
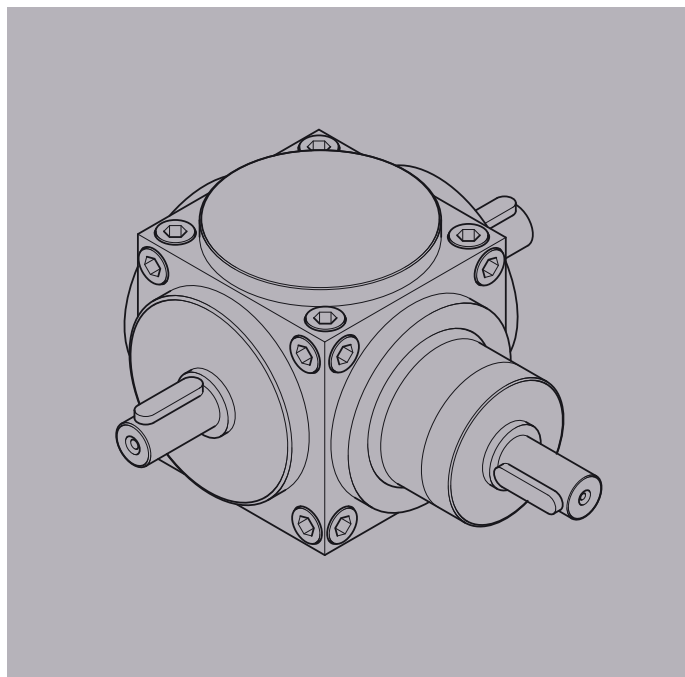
**RINVII D'ANGOLO Tipo S**

**Type S ANGULAR TRANSMISSION UNITS**

RAPPORTI DIVISORI

1:1 a 6:1

DIVIDER RATIOS



LH = Sinistra / Left - RH = Destra / Right

**Rapporto di riduzione**

1:1 - 1,5:1 - 2:1

**Speed reducing ratio**

TIPO Type	A	b	c1	c2	Ød1 j6	Ød2 j6	Øe h7	Øf	g	h1	h2	i	j	k	l	m	n*	o1	o2
☒ 27 S	27	54	95	60	11	11	53	52,8	8	23	23	27	45	2	2	22	M 4	M 4	M 4
☒ 45 S	45	90	130	92	18	18	88	72	10	35	35	45	50	2	2	36	M 6	M 6	M 6
☒ 55 S	55	110	150	107	22	22	108	81	10	40	40	55	55	2	2	44	M 8	M 8	M 8
☒ 70 S	70	140	180	132	32	32	135	98	10	50	50	70	60	2	2	55	M 10	M 12	M 12
85 S	85	170	215	160	40	40	165	118	12	60	60	85	70	2	3	67	M 12	M 16	M 16
105 S	105	210	260	192	45	45	205	128	15	70	70	105	85	2	2	85	M 16	M 16	M 16
120 S	120	240	300	222	55	55	235	138	15	85	85	120	95	2	2	95	M 16	M 20	M 20
140 S	140	280	360	267	60	60	275	150	15	110	110	140	110	2	2	110	M 16	M 20	M 20
180 S	180	360	445	325	75	75	350	210	22	120	120	180	145	3	3	140	M 20	M 20	M 20
200 S	180	360	445	365	75	90	350	210	22	120	160	180	145	3	3	140	M 20	M 20	M 24
● 225 S	225	450	570	410	90	90	440	250	22	160	160	225	185	3	3	175	M 20	M 24	M 24
● 250 S	250	500	628	442	100	100	490	290	24	165	165	250	213	3	5	200	M 24	M 24	M 24

**Rapporto di riduzione**

3:1

**Speed reducing ratio**

TIPO Type	A	b	c1	c2	Ød1 j6	Ød2 j6	Øe h7	Øf	g	h1	h2	i	j	k	l	m	n*	o1	o2
☒ 27 S	27	54	95	60	11	11	53	52,8	8	23	23	27	45	2	2	22	M 4	M 4	M 4
☒ 45 S	45	90	125	92	16	18	88	72	10	30	35	45	50	2	2	36	M 6	M 6	M 6
☒ 55 S	55	110	145	107	20	22	108	81	10	35	40	55	55	2	2	44	M 8	M 8	M 8
☒ 70 S	70	140	175	132	26	32	135	98	10	45	50	70	60	2	2	55	M 10	M 8	M 12
85 S	85	170	205	160	32	40	165	118	12	50	60	85	70	2	3	67	M 12	M 12	M 16
105 S	105	210	245	192	38	45	205	128	15	55	70	105	85	2	2	85	M 16	M 12	M 16
120 S	120	240	285	222	45	55	235	138	15	70	85	120	95	2	2	95	M 16	M 16	M 20
140 S	140	280	330	267	50	60	275	150	15	80	110	140	110	2	2	110	M 16	M 16	M 20
180 S	180	360	435	325	60	75	350	170	22	110	120	180	145	3	3	140	M 20	M 20	M 20
200 S	180	360	435	365	60	90	350	170	22	110	160	180	145	3	3	140	M 20	M 20	M 24
● 225 S	225	450	530	410	75	90	440	210	22	120	160	225	185	3	3	175	M 20	M 20	M 24
● 250 S	250	500	623	442	90	100	490	240	24	160	165	250	213	3	5	200	M 24	M 24	M 24

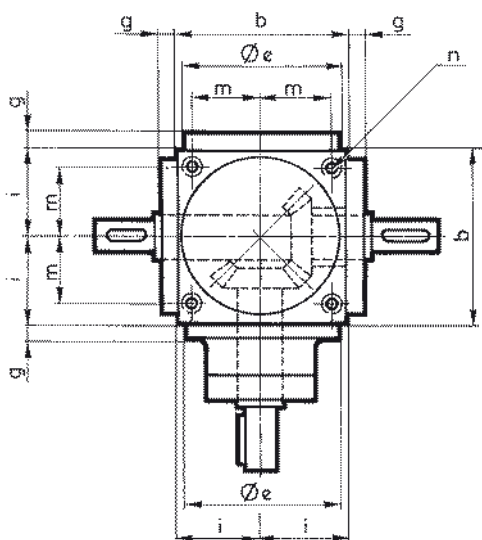
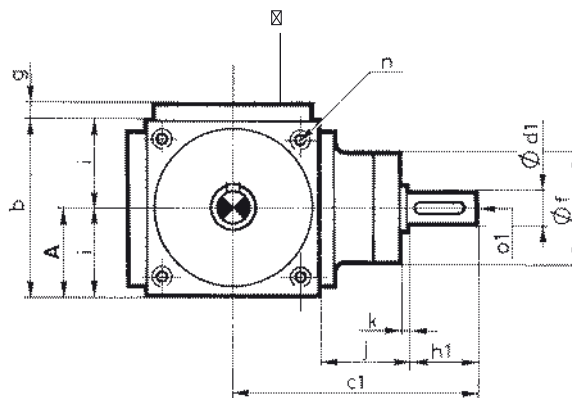
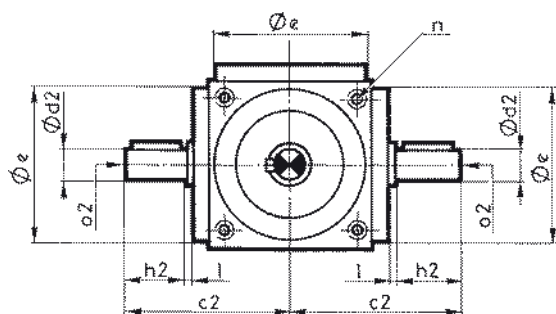
\* Profondità dei fori filettati = n x 1,5

**INFORMAZIONI  
TECNICHE**

- Scatola in acciaio saldato.
- ☒ Modello standard 4 vie. Il modello 5 vie su richiesta o sui montaggi a doppio supporto.
- Questa serie può essere eseguita su richiesta con albero di uscita rinforzato «tipo R» non per tipo 27.

**COSTRUZIONE STANDARD**

**STANDARD CONSTRUCTION**



**CHIAVETTATURA**

secondo Norme DIN 6885

- Albero d'entrata  $\phi d1$  secondo rapporto di riduzione
- Albero di uscita  $\phi d2$  per qualsiasi rapporto

**SPLINING**

according to DIN 6885 provisions

- $\phi d1$  input shaft according to reduction ratio
- $\phi d2$  output shaft for any ratio

Tipo Type	Rapporto/Ratio 1:1 - 1,5:1 - 2:1 $\phi d1$	Rapporto/Ratio 3:1 $\phi d1$	Rapporto/Ratio 4:1 $\phi d1$	Rapporto/Ratio 5:1 - 6:1 $\phi d1$	Tutti i rapporti All the ratios $\phi d2$
☒ 27 S	4 x 4 x 20	4 x 4 x 20	4 x 4 x 20	4 x 4 x 20	6 x 6 x 32
☒ 45 S	6 x 6 x 32	5 x 5 x 25	4 x 4 x 20	4 x 4 x 20	6 x 6 x 32
☒ 55 S	6 x 6 x 36	6 x 6 x 32	5 x 5 x 25	5 x 5 x 20	6 x 6 x 36
☒ 70 S	10 x 8 x 45	8 x 7 x 40	6 x 6 x 32	5 x 5 x 25	10 x 8 x 45
85 S	12 x 8 x 56	10 x 8 x 45	8 x 7 x 40	6 x 6 x 36	12 x 8 x 56
105 S	14 x 9 x 63	10 x 8 x 50	10 x 8 x 45	8 x 7 x 45	14 x 9 x 63
120 S	16 x 10 x 80	14 x 9 x 63	10 x 8 x 50	10 x 8 x 50	16 x 10 x 80
140 S	18 x 11 x 100	14 x 9 x 70	14 x 9 x 63	12 x 8 x 63	18 x 11 x 100
180 S	20 x 12 x 110	18 x 11 x 100	16 x 10 x 80	14 x 9 x 70	20 x 12 x 110
200 S	20 x 12 x 110	18 x 11 x 100	16 x 10 x 80	14 x 9 x 70	25 x 14 x 140
225 S	25 x 14 x 140	20 x 12 x 110	20 x 12 x 110	18 x 11 x 100	25 x 14 x 140
250 S	28 x 16 x 140	25 x 14 x 140	20 x 12 x 110	20 x 12 x 110	28 x 16 x 140

☒ Modello standard 4 vie. Il modello 5 vie su richiesta o sui montaggi a doppio supporto.

☒ Standard Model 4 ways. 5 ways Model on request.

**Rapporto di riduzione**

**4:1**

**Speed reducing ratio**

TIPO Type	A	b	c1	c2	$\phi d1$ j6	$\phi d2$ j6	$\phi_e$ h7	$\phi_f$	g	h1	h2	i	j	k	l	m	n*	o1	o2
☒ 45 S	45	90	118	92	11	18	88	62	10	23	35	45	50	2	2	36	M 6	M 4	M 6
☒ 55 S	55	110	140	107	16	22	108	72	10	30	40	55	55	2	2	44	M 8	M 6	M 8
☒ 70 S	70	140	165	132	20	32	135	81	10	35	50	70	60	2	2	55	M 10	M 8	M 12
85 S	85	170	200	160	26	40	165	98	12	45	60	85	70	2	3	67	M 12	M 8	M 16
105 S	105	210	240	192	32	45	205	110	15	50	70	105	85	2	2	85	M 16	M 12	M 16
120 S	120	240	270	222	38	55	235	120	15	55	85	120	95	2	2	95	M 16	M 12	M 20
140 S	140	280	320	267	45	60	275	135	15	70	110	140	110	2	2	110	M 16	M 16	M 20
180 S	180	360	410	325	55	75	350	170	22	85	120	180	145	3	3	140	M 20	M 20	M 20
200 S	180	360	410	365	55	90	350	170	22	85	160	180	145	3	3	140	M 20	M 20	M 24
● 225 S	225	450	530	410	70	90	440	210	22	120	160	225	185	3	3	175	M 20	M 20	M 24
● 250 S	250	500	593	442	75	100	490	240	24	130	165	250	213	3	5	200	M 24	M 20	M 24

**Rapporto di riduzione**

**5:1 - 6:1**

**Speed reducing ratio**

TIPO Type	A	b	c1	c2	$\phi d1$ j6	$\phi d2$ j6	$\phi_e$ h7	$\phi_f$	g	h1	h2	i	j	k	l	m	n*	o1	o2
☒ 45 S	45	90	118	92	11	18	88	62	10	23	35	45	50	2	2	36	M 6	M 4	M 6
☒ 55 S	55	110	135	107	14	22	108	72	10	25	40	55	55	2	2	44	M 8	M 6	M 8
☒ 70 S	70	140	160	132	16	32	135	81	10	30	50	70	60	2	2	55	M 10	M 6	M 12
85 S	85	170	195	160	22	40	165	98	12	40	60	85	70	2	3	67	M 12	M 8	M 16
105 S	105	210	240	192	30	45	205	110	15	50	70	105	85	2	2	85	M 16	M 8	M 16
120 S	120	240	270	222	35	55	235	120	15	55	85	120	95	2	2	95	M 16	M 12	M 20
140 S	140	280	320	267	42	60	275	135	15	70	110	140	110	2	2	110	M 16	M 16	M 20
180 S	180	360	405	325	50	75	350	170	22	80	120	180	145	3	3	140	M 20	M 16	M 20
200 S	180	360	405	365	50	90	350	170	22	80	160	180	145	3	3	140	M 20	M 16	M 24
● 225 S	225	450	520	410	60	90	440	210	22	110	160	225	185	3	3	175	M 20	M 20	M 24
● 250 S	250	500	583	442	70	100	490	240	24	120	165	250	213	3	5	200	M 24	M 20	M 24

Depth of threaded holes =  $n \times 1,5$

**TECHNICAL INFORMATION**

- Welded steel box
- ☒ Standard Model 4 ways. 5 ways Model on request.
- On request, this series can be supplied with «type R» reinforced output shaft, excluding type 27.