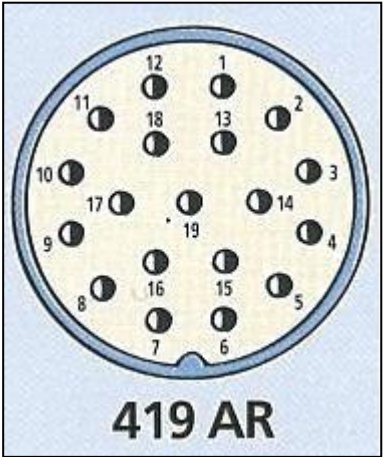


Socapex 19 pins



Black Plating – Split Backshell

Male Inline Plug

Straight



Solder : **SLDFMD419AR**
Crimp : **SLXDFMD419AR**

Right Angle



Solder : **SLDFMC419AR**
Crimp : **SLXDFMC419AR**

ROHS
Compliant

Female Inline Receptacle

No ground contacts



Solder : **SLDFFDR419AR**
Crimp : **SLXFFDR419AR**

7 ground contacts



Solder : **SLGFFDR419AR**
Crimp : **SLXGFFDR419AR**

Panel Mount Female Receptacle

No ground contacts



Solder : **SLDEF419AR**
Crimp : **SLXDEF419AR**

7 ground contacts



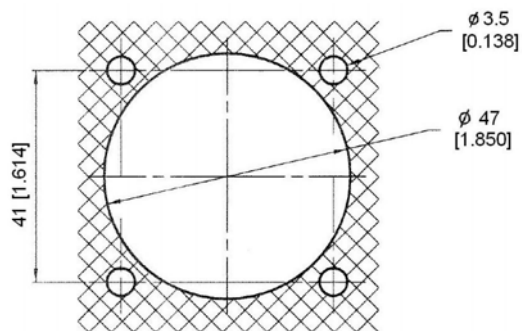
Solder : **SLGDEF419AR**
Crimp : **SLXGDEF419AR**

Panel Mount Male Plug



Solder : **SLDEME419AR**
Crimp : **SLXDEME419AR**

Panel Drilling



White/Black Plating – Split Backshell

NO ROHS

Male Inline Plug

Straight



Solder : **SLFMD419AR**
Crimp : **SLXFMD419AR**

Right Angle



Solder : **SLFMC419AR**
Crimp : **SLXPMC419AR**

Female Inline Receptacle

No ground contacts



Solder : **SLFFDR419AR**
Crimp : **SLXFFDR419AR**

7 ground contacts



Solder : **SLGFFDR419AR**
Crimp : **SLXGFFDR419AR**

Panel Mount Female Receptacle

No ground contacts



Solder : **SLEF419AR**
Crimp : **SLXEF419AR**

7 ground contacts



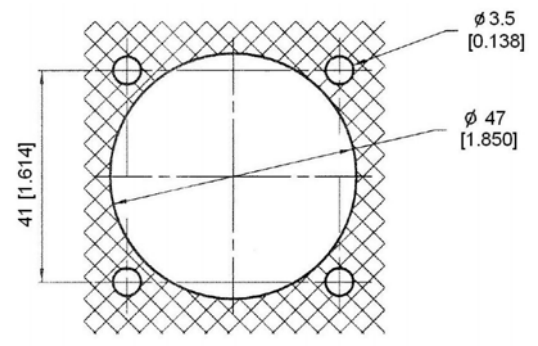
Solder : **SLGEF419AR**
Crimp : **SLXGEF419AR**

Panel Mount Male Plug



Solder : **SLEME419AR**
Crimp : **SLXEME419AR**

Panel Drilling



Black Plating – Monopiece Backshell

ROHS
Compliant

Outlet PG29

Male Inline Plug



Solder : **SLDFMDPG29419AR**
Crimp : **SLXDFMDPG29419AR**

Outlet PG36



Solder : **SLDFMDPG36419AR**
Crimp : **SLXDFMDPG36419AR**

Female Inline Receptacle – 7 Ground Contacts



Solder : **SLGDFDRPG29419AR**
Crimp : **SLXGDFDRPG29419AR**



Solder : **SLGDFDRPG36419AR**
Crimp : **SLXGDFDRPG36419AR**

Female Inline Receptacle – No Ground Contacts



Solder : **SLDFFDRPG29419AR**
Crimp : **SLXDFFDRPG29419AR**



Solder : **SLDFFDRPG36419AR**
Crimp : **SLXDFFDRPG36419AR**

Accessories

Caps :

ROHS

SLBEF4B



For Panel Mount
Female Receptacle

BFM4B



For Panel Mount
Male Plug

SLBFM4B



For Male
Inline Plug

SLBFFR4B



For Female
Inline Receptacle

Backshells :

ROHS



Straight :
47380N



Right angle :
47384N

Crimp contacts :

ROHS



Male : **35941**

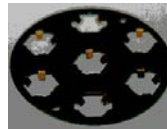


Female : **35970**



Female - Ground : **141803**

Grounding Disc :



Male insert : **140654-91**
(front mounting)

Female insert : **140653-00**
(rear mounting)

Crimping Tools :

Plier : **809857**
Locator : **TP943**



Removal Tool for
female contact :
21745



Insertion tool : **141900**



Removal Tool for
male contact :
21746

