



# Configuration Tool

## ACE Pilot

ACE Pilot is the indispensable configuration and programming tool that delivers all of the flexibility you need to configure and manage your Itron DLMS meters (ACE4000, ACE6000, ACE SL7000, ACE8000). This easy to use software tool allows you to create and configure your Itron meters and read selected information enabling point to point meter monitoring.

Building on our experience of configured meters with the AIMS-Pro tool, ACE Pilot is the new enhanced configuration tool proposed by Itron. This configuration tool is compatible with the latest operating systems available on the market.

ACE Pilot has been designed with the latest technology with an easy to use interface, optimized configuration workload and optimized maintenance.

New features include favorite filters, meter auto-detection, inconsistency resolution troubleshooting, shortcuts and multiple language support.

### KEY APPLICATIONS

#### Configuration & Programming

ACE Pilot enables the configuration & programming of Itron's meters.

#### Configuration Management

ACE PILOT facilitates the management of the complete configurations of your installed meter base.

#### Point to Point Meter Monitoring

ACE PILOT allows meter data to be read, enabling easy diagnostics during maintenance process.

### FEATURES & BENEFITS

- » Reusable configuration for batch of meters
- » Full meter commissioning support for C&I and T&D meters
- » User Management

### Commissioning tool

During the field installation process, ACE PILOT can be used to verify the correct parameters of the installation, and can export data as reports.

## SPECIFICATIONS

### Administration

- » Communication types (PSTN, GSM, GPRS, TCP-IP, optical head)
- » Users configuration upon various profiles
- » Compatible Windows XP SP2+, Vista, 7, Server 2003, Server 2008
- » Single License software

### Metering points

- » Manage all DLMS Itron's meters
  - ACE4000
  - ACE6000
  - ACE SL7000
  - ACE8000
- » Meter import from AIMS-Pro

### Configuration

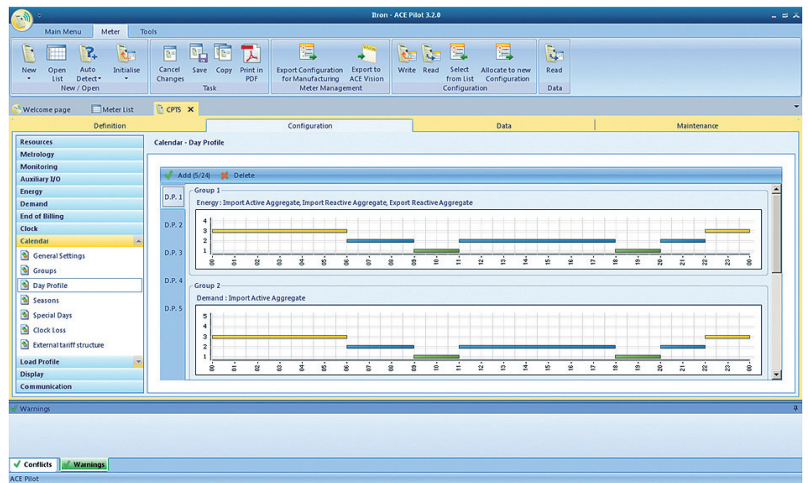
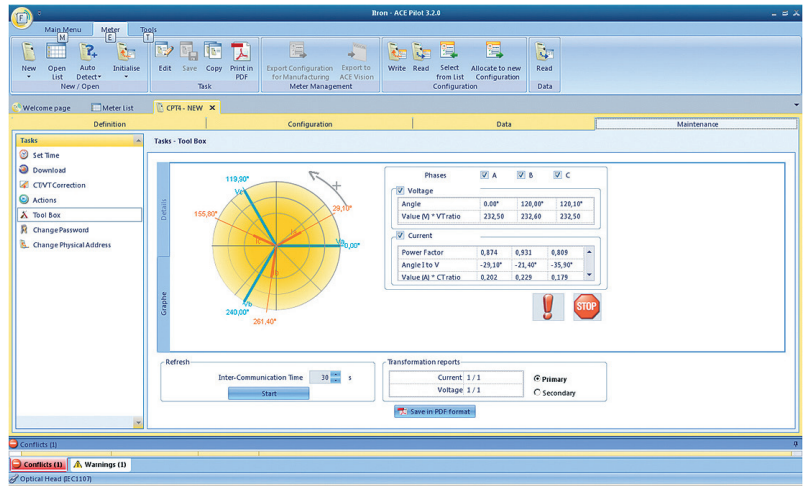
- » Creation / Edition
- » Copy / Paste / Print
- » Graphical tariffication
- » Favorite filters
- » Import configuration data from AIMS-Pro

### Point to point exploitation of meters

- » Writing configuration on meters
- » Reading all data from meters
- » Data export in EXCEL
- » Firmware download (upon request)

### Maintenance tool (only C&I / T&D meters)

- » Graphical Tool box
- » Save data in PDF format



The screenshot shows the 'Meters' window in ACE Pilot 3.2.6, displaying a table of meter information. The table has columns for Name, Serial Number, Meter Type, Firmware Version, Group, Client, and Last Save.

Name	Serial Number	Meter Type	Firmware Version	Group	Client	Last Save
51025722	51025722	SL7000 761	5.35	Katik		22/02/2011 10:37
51025723	51025723	SL7000 761	5.35	Katik		22/02/2011 10:37
55027330	55027330	ACE6000 661	2.21			20/10/2011 15:50
55026651	55026651	ACE6000 661	2.21			21/12/2011 18:08
55033937	55033937	ACE6000 661	2.21			04/02/2012 11:31
661.245 Iue	55050179	ACE6000 661	2.65			04/12/2011 17:30
ACE6000 - Indonesia - 1	55016694	ACE6000 661	2.21			05/02/2011 05:46
ACE6000 - RWP, Indones...	55029917	ACE6000 661	2.21			05/02/2011 05:53
ACE6000 - RWP & Lamp ...	55022917	ACE6000 661	2.21			05/02/2011 06:25
ACE6000 Energy ICT	55017162	ACE6000 661	2.21			24/03/2011 16:34
ACE6000 Energy ICT- SMS	55017162	ACE6000 661	2.21			21/04/2011 11:55
ACE6000 TEST	50000032	ACE6000 661	1.86			21/10/2009 17:59
ACE6000-1 - FEWA - Orig...	A2000012	ACE6000 661	2.21			09/09/2011 16:37
ACE6000-1 - FEWA - Tests	A2000012	ACE6000 661	2.21			09/09/2011 09:40
ACE650_SEC_134_MAX	12345678	ACE6000 650	1.24			15/01/2009 18:32
ACE650_SEC_134_MIN	12345678	ACE6000 650	1.24			15/01/2009 18:31
ACE661 Far Test	50000033	ACE6000 661	1.86			21/10/2009 18:32
ACEEK - Ethernet	50081381	ACE6000 661	1.86			13/01/2012 15:17
ACEEK - Ethernet - Media...	55017162	ACE6000 661	2.21			28/10/2011 10:51
ACEEK - JAMP	50094469	ACE6000 661	1.86			01/12/2011 22:40
ACEEK - ROMANIA	55003443	ACE6000 661	2.21			22/09/2011 11:40
ACEEK - Tunneling	55017162	ACE6000 661	2.21			21/10/2011 09:22
ACEEK DUBAI	50014966	ACE6000 661	1.86			28/11/2011 14:17
ACEEK Greece	55006933	ACE6000 661	2.65			07/10/2011 18:27
ACEEK TRINIC CNA, roma...	55017244	ACE6000 661	2.21			22/02/2011 20:48



Our company is the world's leading provider of smart metering, data collection and utility software systems, with over 8,000 utilities worldwide relying on our technology to optimize the delivery and use of energy and water.

To realize your smarter energy and water future, start here: [www.itron.com](http://www.itron.com)

For more information, contact your local sales representative or agency:

### ITRON

1, Avenue des Temps Modernes  
86361 Chasseneuil du Poitou cedex  
France

**Phone:** +33 5 49 62 70 00

**Fax:** +33 5 49 62 70 89